



Histopathological evaluation of *Oreochromis mossambicus* gills and liver as biomarkers of earthen pond water pollution

SE Abalaka

Department of Veterinary Pathology, University of Abuja, Abuja, Nigeria

*Correspondence: Tel.:+2348187384271; E-mail: seabalaka@yahoo.co.uk

Abstract

Oreochromis mossambicus were sampled from a semi-intensively managed polyculture earthen pond in Bagauda, Nigeria for histopathological changes in the gills and liver as early warning signs of pond water pollution. Pond water was sourced from nearby Bagauda dam through a single 28 inches water pipe. The physicochemical parameters of the earthen pond water were within acceptable limits for the growth and survival of *O. mossambicus*. Although observed histopathological lesions were significantly ($p < 0.05$) higher in the liver than in the gills of sampled fish, lesions were within the normal functioning of respective organs based on the degree of tissue change protocol. The observed lesions indicated low level pollution of the earthen pond water. The result of this preliminary work notwithstanding, there is a need for constant monitoring of the earthen pond water and its water source (Bagauda dam) for pollutants. This is to ensure the continuous well-being and increased productivity of stocked fish within the earthen pond because of the large catchment area being drained by the dam relative to increasing human anthropogenic activities within the area.

Keywords: Earthen pond, Histopathology, *Oreochromis mossambicus*, Polyculture, Semi-intensive management

Received: 22-09- 2016

Accepted: 10-01-2017

Introduction

Aquaculture is arguably the most vibrant sector of the global food system, being the fastest growing sector alongside terrestrial crop and livestock production (Troell *et al.*, 2014). This is because of increasing human population and, by implication, increasing demand for cheap protein coupled with declining wild fish stock (Naylor *et al.*, 2000). This is in addition to the fact that time of fish harvest can be synchronized to coincide with market demand (Ardill, 1982). Water quality is the important limiting factor in pond fish culture (Edun *et al.*, 2014). Water pollution greatly affect aquaculture yield (Akanni & Akinwumi, 2007) hence aquatic pollution has become a problem of great concern worldwide (Dane & Sisman, 2015). Aquatic pollution causes severe morphologic and physiologic alterations in aquatic organisms (Mazon *et al.*, 1999), especially in chronic and sub-lethal exposures where structural and functional changes are more frequent than mass

mortality (Flores-Lopes & Thomaz, 2011). Morphological examination of fish organs have been used to evaluate effect of pollutants in fish (Poleksic & Mitrovic-Tutundzic, 1994). That is why histopathological assessment of fish allows for early warning signs of disease and detection of long term injury in cells, tissues and organs (Marchand *et al.*, 2009) before obvious manifestations.

Tilapia is one of the most important food fish cultured worldwide (Sevilleja, 1985) although these warm water fishes are indigenous to Africa (Popma & Masser, 1999). However, *Oreochromis* spp is reportedly the most important in modern aquaculture (Yadar, 2006), especially *O. mossambicus* (Peters, 1852) that is known for fast growth rate and tolerance of wide range of environmental conditions (Canonic *et al.*, 2005). Most times Tilapia is cultured with other fish species to take advantage of many natural foods available in

ponds as well as to produce a secondary crop and/or control tilapia recruitment, in addition to improving water quality for enhanced productivity (Rakocy & McGinty, 1989). Although semi-intensive pond management of tilapia aquaculture requires low capital input, it is greatly influenced by environmental conditions (Yakubu *et al.*, 2014) hence the need for this study. Reports of histopathological evaluation of toxicants effects in *O. mossambicus* exist (Midhila & Chitra, 2015; Patel *et al.*, 2016) but there is dearth of information on histopathological assessment of *O. mossambicus* from semi-intensively managed polyculture earthen pond as early warning signs of pond water pollution. The work therefore, aimed to perform histopathological evaluation of the gills and liver of *O. mossambicus* from a semi-intensively managed polyculture earthen pond in Bagauda, Nigeria in order to ascertain the extent of cellular damage as early warning signs of the earthen pond water pollution.

Materials and Methods

The temperature, pH and dissolved oxygen (DO) content of water samples were determined with conventional clinical mercury-in-glass thermometer submerged in an inclined position about elbow deep, Hanna portable pH meter (Hanna Instruments) and the modified Winkler-Azide method (Lind, 1979; APHA, 1985), respectively within the first four (4) hours of sampling after stabilizing each sample with Manganous sulphate. Biological oxygen demand and ammonia contents of the pond water were measured with HI83200 multiparameters photometer for laboratories (Hanna Instruments). The study earthen pond, with a surface area of 1.83 acres, belonged to Kano state Ministry of Agriculture and Natural Resources fish seed multiplication centre, Bagauda, Kano state, Nigeria. The farm is situated between latitude 11°21' and 11°45' N and longitude 8°15' and 8°31' E, and about 57 km from Kano town along Kano - Tiga - Jos road in Wak District of Bebeji Local Government Area, Kano state, Nigeria (Bichi & Dawaki, 2010). The pond had both thin and broad leaf plants growing within it and was stocked with about 3000 *Clarias gariepinus*, *Heterotis niloticus*, *Oreochromis niloticus*, *Oreochromis mossambicus* and *Tilapia zillii* juveniles each 10 months prior to sampling. The pond was initially filled with water from Baguada dam through a 28 inches water pipe via gravity (Figure 1) into

three stilling basins with filters supplying five concrete ponds, 19 earthen ponds and four *Lates* spp raceway ponds through water channels. Bagauda dam has a water storage capacity of about 22,000,000 m³ liters (UNDRO, 1988). The dam is bordered on all sides by arable agricultural land outside its southeastern border occupied by Nigerian Law School, Kano study centre, Baguada, Nigeria. Fish pond water was subsequently topped once on monthly basis during the rainy season but twice weekly during the dry season from the same Bagauda dam. Fish were occasionally fed with certain amounts of groundnut cake mixed with wheat bran. The engaged local fishermen were able to catch 16 adult *O. mossambicus* (152.30 ± 25.16 g mean weight and 20.24 ± 0.64 cm mean total length) with drag nets during sampling. Sampling was done just once in the early hours of the morning so as to eliminate seasonal variations (Kutović *et al.*, 2008).

The gills and liver of sampled fish were harvested for histopathological evaluation after fish were euthanized with 40 % ethyl alcohol (Fafioye *et al.*, 2005). Tissues were immediately fixed in Bouin solution prior to histopathological processing using standard method of paraffin embedding, sectioning at 5 µm and staining with haematoxylin and eosin (Bancroft & Cook, 1994). Prepared slides were viewed under various magnifications for lesions or histopathological changes. The degree of tissue change (DTC) were determined by modifying the semi-quantitative method described by Poleksic & Mitrovic-Tutundzic (1994) using the formula: $DTC = (1 \times \sum I) + (10 \times \sum II) + (100 \times \sum III)$ after screening the number of tissue lesions in stages I, II and III for the particular organ, respectively. Stage I alterations were lesions, which did not impair the normal functioning of the tissue while stage II alterations were more severe lesions that impaired the normal functioning of the tissue. Finally, stage III alterations were very severe lesions, which induced irreparable tissue damage. Calculated DTC value for each organ was interpreted as follows: 0 -10 for normal organ, 11 – 20 for slightly damaged organ, 21 – 50 for moderately damaged organ, 51-100 for severely damaged organ and above 100 for irreversibly damaged organ, respectively.

Data were expressed as mean ± SD and analyzed for statistical significance (P<0.05) with student *t*-test using GraphPad software programme (GraphPad Prism version 4.0, San Diego, USA).

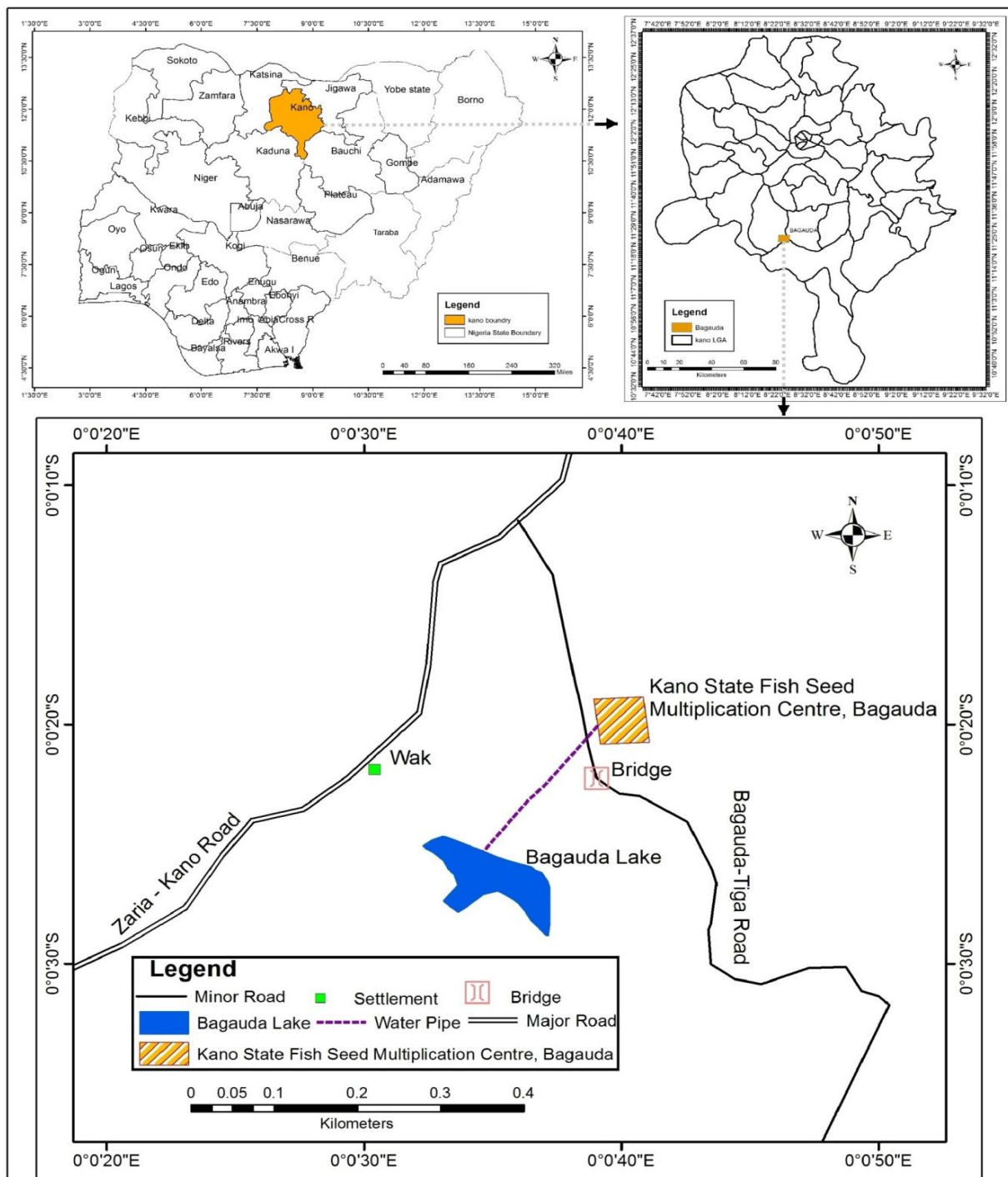


Figure 1: Map of Bagauda, Kano State, Nigeria.
 Source: Modified from Administrative Map of Kano 2016

Results

The physicochemical parameters of the sampled semi-intensively managed polyculture earthen pond water were as shown in Table 1. Histopathological changes, incidence and the DTC in the gills and liver of *O. mossambicus* sampled from a semi-intensively

managed polyculture earthen pond in Bagauda, Nigeria were as presented in Tables 2 & 3 as well as in Plates 1 – 7, respectively. The degree of tissue change was significantly ($p < 0.05$) higher in the liver compared to the gills of sampled fish.

Table 1: Physicochemical parameters of water sampled (n=6) from a semi-intensively managed polyculture earthen pond in Baguada, Nigeria

S/no.	Physicochemical parameters	Values (mean ± SD)	Acceptable range
1.	Temperature (°C)	28.35 ± 0.12	15 – 35*
2.	pH	7.24 ± 0.16	7.0 – 9.5*
3.	Dissolved oxygen (mg/L)	5.39 ± 0.69	> 3 – 5*
4.	Biological oxygen demand (mg/L)	5.60 ± 1.26	3 – 6*
5.	Ammonia (mg/L)	0.50 ± 0.52	0.05 – 0.1**

(*) Bhatnagar & Devi (2013)

(**) Francis-Flyod *et al.* (2009)

Table 2: Histopathological changes, incidence and the degree of tissue change (DTC) in the gills and liver of *Oreochromis mossambicus* sampled from a semi-intensively managed polyculture earthen pond in Baguada, Nigeria

DTC	Histopathological lesions (incidence)	
	Gills	Liver
I	- Congestion (18.75%) - E. hyperplasia (56.25%) - E. lifting (6.25%) - Clubbing (12.50%) - Oedema (50.00%)	- H. cytoplasmic vacuolation (56.25%) - HP. cytoplasmic vacuolation (68.75%)
II	- Aneurysm (31.25%)	- Congestion (81.25%) - Bile stagnation (87.50%)
III	-	-

E: Epithelial; H: Hepatic; HP: Hepatopancreatic

Table 3: The degree of tissue change (DTC) between the gills and liver of *Oreochromis mossambicus* sampled from a semi-intensively managed polyculture earthen pond in Baguada, Nigeria

Fish specie	Gills	Liver	t-value	P-value
<i>Oreochromis mossambicus</i>	0.11 ± 0.06	0.19 ± 0.08	3.15	0.0037*

Value with asterisk (*) is statistically significant (P<0.05)

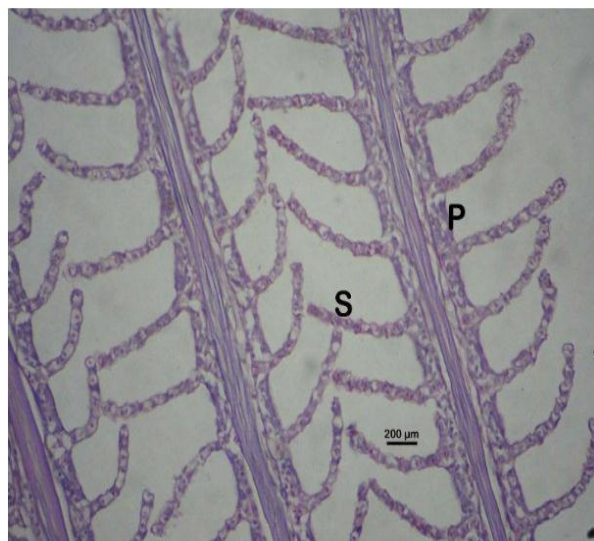


Plate 1: Photomicrograph of a section of the gill of *Oreochromis mossambicus* sampled from a semi-intensively managed polyculture earthen pond in Baguada, Nigeria: Note primary lamellae (P) and secondary lamellae (S). H & E

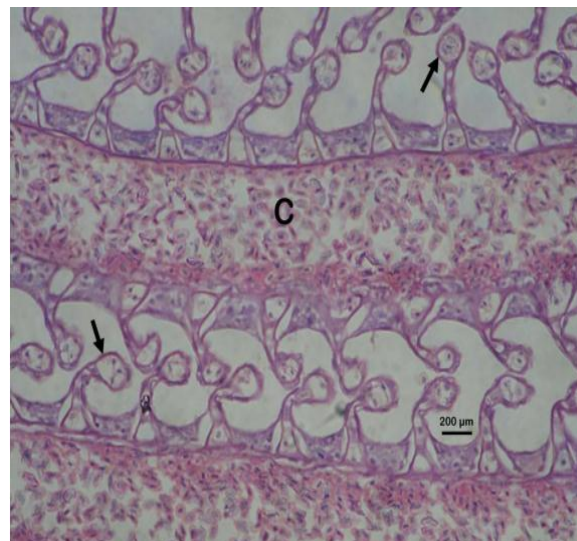


Plate 2: Photomicrograph of a section of the gill of *Oreochromis mossambicus* sampled from a semi-intensively managed polyculture earthen pond in Baguada, Nigeria: Note congestion (C) and lamellar clubbing (arrows). H & E

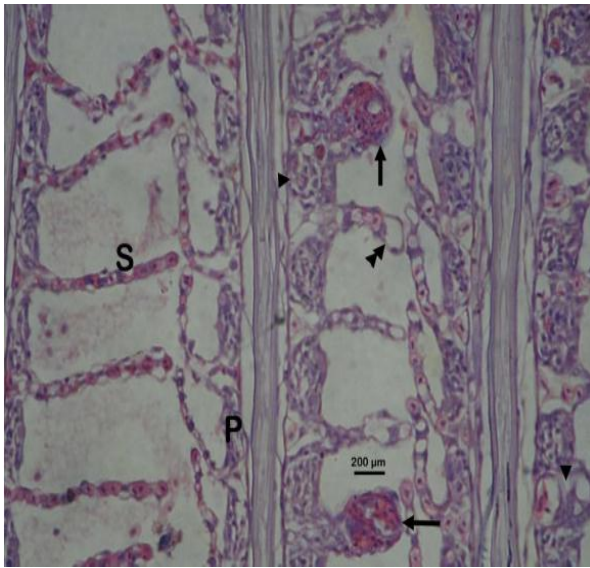


Plate 3: Photomicrograph of a section of the gill of *Oreochromis mossambicus* sampled from a semi-intensively managed polyculture earthen pond in Baguada, Nigeria: Note primary lamellae (P), secondary lamellae (S), oedema (single arrow heads), epithelial lifting (double arrow heads) and aneurysm (arrows). H & E

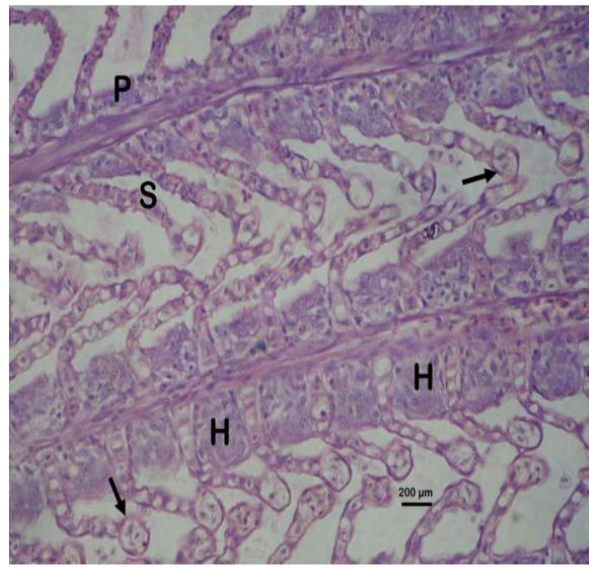


Plate 4: Photomicrograph of a section of the gill of *Oreochromis mossambicus* sampled from a semi-intensively managed polyculture earthen pond in Baguada, Nigeria: Note primary lamellae (P), secondary lamellae (S), lamellar hyperplasia (H) and lamellar clubbing (arrows). H & E

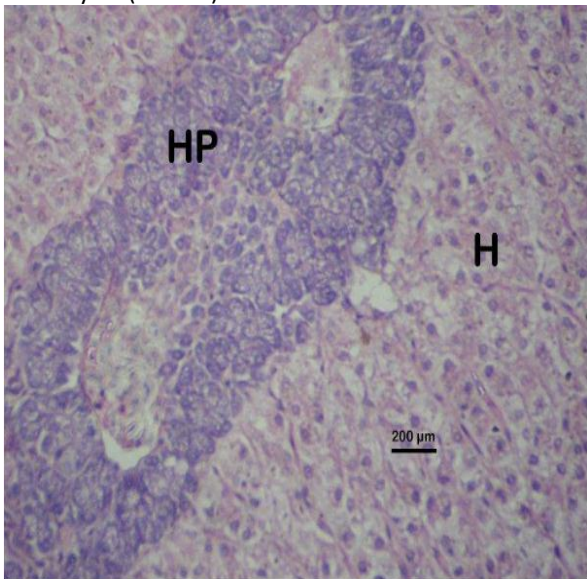


Plate 5: Photomicrograph of a section of the liver of *Oreochromis mossambicus* sampled from a semi-intensively managed polyculture earthen pond in Baguada, Nigeria: Note hepatocytes (H) and the hepatopancreas (HP). H & E

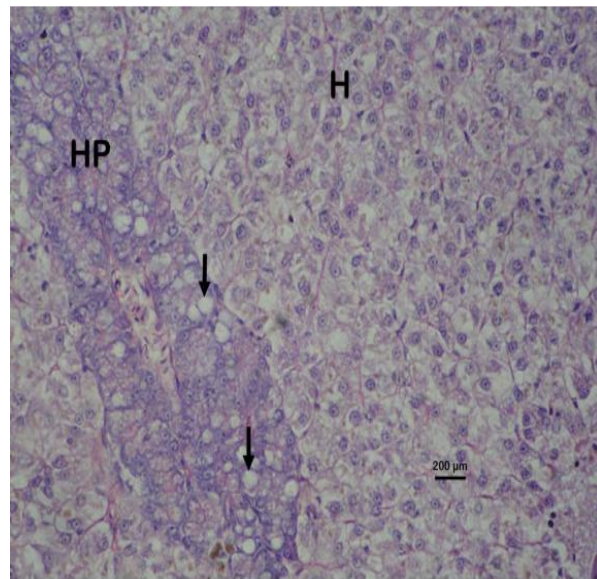


Plate 6: Photomicrograph of a section of the liver of *Oreochromis mossambicus* sampled from a semi-intensively managed polyculture earthen pond in Baguada, Nigeria: Note hepatocyte (H), hepatopancreas (HP) and hepatopancreatic cytoplasmic vacuoles (arrows). H & E

Discussion

The physicochemical parameters of sampled polyculture earthen pond water were within acceptable limits for the growth and survival of

tilapia fish according to Bhatnagar & Devi (2013). This was responsible for the observed low level gills and liver alterations that did not affect the normal functioning of respective organs in sampled fish

based on the DTC protocol. This is because water quality parameters outside these ranges stresses fish, reduces growth and predisposes fish to diseases (Estim & Mustafa, 2014) and/or causes structural tissue damage in exposed fish, especially ammonia whose water level is closely related to water pH and, to a lesser extent, lower fish water temperature and DO contents (Popma & Lovshin, 1996). Although the study earthen pond water ammonia level was above the recommended value, *Tilapia* spp are known to tolerate salinity, high water temperature, low DO and high ammonia concentration than most commonly cultured freshwater fish (Popman & Lovshin, 1996). They may tolerate ammonia level up to 2.4 mg/L in unacclimatized fish or 3.4 mg/L in those acclimatized to sub-lethal concentration (Redner & Stickney, 1979). However, ammonia concentration exceeding 2.0 mg/L is reported to cause gill and tissue damage, extreme lethargy and death in exposed fish (Bakar *et al.*, 2016). The slightly elevated ammonia level within the study earthen pond might be due to the presence of carnivorous fish within it, which are known to excrete more ammonia than herbivorous fish (Ibrahim & El-Naggar, 2010). It might also be due to sewage and animal waste pollution of the pond water and/or its Baguada dam water source from

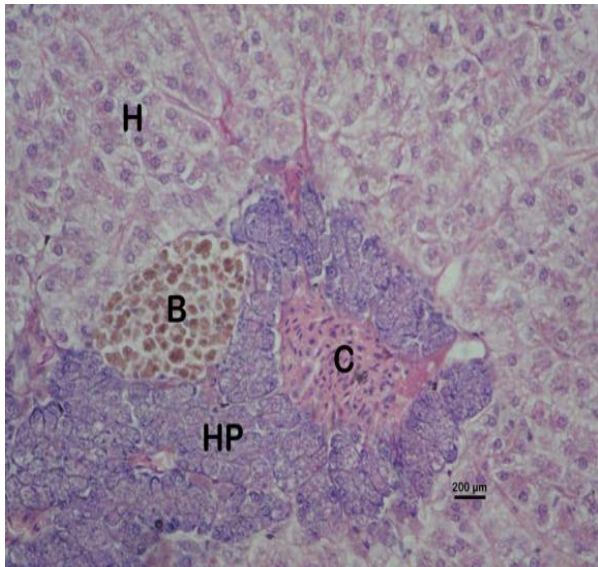


Plate 7: Photomicrograph of a section of the liver of *Oreochromis mossambicus* sampled from a semi-intensively managed polyculture earthen pond in Baguada, Nigeria: Note hepatocyte (H), hepatopancreas (HP), congestion (C) and bile pigment (B). H & E

activities of inhabitants of bordering Nigerian Law School, Kano study centre as well as those of both arable and livestock farmers around the dam. This is because the presence of ammonia in any surface water indicates possible sewage and animal waste pollution of that aquatic environment (Obigacion, 2015). Similar physicochemical parameters have been reported in polyculture earthen ponds (Hassan *et al.*, 2008; Saeed & Batran, 2014; Shoko *et al.*, 2014). Ammonia level within the study fish pond water, although within tolerable level, might be responsible for the observed low level cellular damage in the gills and liver of exposed fish. This is because pathological changes are usually observed in the gills, liver and kidney of fish exposed to sub-lethal ammonia concentration (Ip *et al.*, 2001) with fish mortality only occurring at toxic level in fish pond water (Hargreaves & Tucker, 2004).

The observed epithelial hyperplasia is a non-specific response induced by many gill irritants (Mallat, 1985) in exposed fish, including ammonia. It is considered a protective response of exposed fish to reduce absorption rate by increasing diffusion distance across gill surfaces (Mallat, 1985; Albassam *et al.*, 1987). Although gill hyperplasia was mild in the study, these reactions might reduce oxygen diffusion across gill epithelium leading to hypoxia in extreme cases (Heath, 1987). This is even as fish has the capacity to compensate for low oxygen uptake by increasing ventilation rate (Fernandes & Mazon, 2003). The observed congestion was attempted to increase blood flow to damaged gills in order to improve oxygen uptake and supply to internal organs (Doherty *et al.* 2013).

The aneurysm was caused by damage to pillar cells and therefore, the structural integrity of lamellar vascular system (Martinez *et al.*, 2004). Excessive aneurysm can impair respiratory efficiency, especially at higher temperature, when dissolved oxygen levels are low and metabolic oxygen demand is high (Roberts & Rodger, 2012). Although the observed gill lesions were not lethal, they might retard growth and affects reproduction (Das & Mukherjee, 2000). Fish liver suffers morphological alterations in toxic exposures (Camargo & Martinez, 2007) due to its position; function and blood supply (Van der Oost *et al.*, 2003). Hepatic fatty degeneration evidenced by the observed cytoplasmic vacuolations within hepatocytes and hepatopancreatic cells were common responses of fish to toxicant exposures (Agamy, 2012). Such

alterations are usually associated with protein synthesis inhibition, energy depletion or a shift in substrate utilization (Hinton & Lauren, 1990). The observed bile stagnation was indicative of possible hepatic metabolic damage (Fanta *et al.*, 2003). However, the obtained DTC values of 0.11 ± 0.06 and 0.19 ± 0.08 in the gills and liver of sampled fish differed from 9.75 ± 3.00 and 14.06 ± 9.46 reported for *Auchenoglanis occidentalis* from Tiga dam, Nigeria by Abalaka (2015). Srivastav *et al.* (1997) and Evans *et al.* (2005) reported that although *Tilapia* spp have kidneys, most of the functions controlled by pulmonary and renal processes in mammals are actually performed by fish gills. Therefore, fish gills and liver represent important target organs suitable for histopathological evaluation of cellular damage (Rabbitto *et al.*, 2005; Oliveira Ribeiro *et al.* 2006) in polluted fish water.

In conclusion, the physicochemical parameters of the earthen pond and the observed

histopathological changes in the gills and liver of the sampled fish were within acceptable limits and the normal functioning of respective organs base on the DTC protocol. However, these lesions indicated low level pollution of the study earthen pond water as early warning signs of the state of the earthen pond water quality. This calls for routine monitoring of the earthen pond water and its water source (Bagauda dam) for toxicants, especially heavy metals, in order to ensure the continuous well-being and survival of stocked fish for enhanced productivity. This is because of the large drainage catchment area of Bagauda dam, Nigeria in relation to the increasing human anthropogenic activities within the area.

Acknowledgements

The contributions of Mr. Umar, A., Mr. Williams, A. S. and Mr. Akolo, F. are well appreciated.

References

- Abalaka SE (2015). Heavy metals bioaccumulation and histopathological changes in *Auchenoglanis occidentalis* fish from Tiga dam, Nigeria. *Journal of Environmental Health Sciences and Engineering*, **13**(1): 67-74.
- Agamy E (2012). Histopathological liver alterations in juvenile rabbit fish (*Siganus canaliculatus*) exposed to light Arabian crude oil, dispersed oil and dispersant. *Ecotoxicology and Environmental Safety*, **75**(1): 171-179.
- Albassam M, Moore J & Sharma A (1987). Ultrastructural and clinicopathological studies on the toxicity of cationic acrylamide-based flocculant to rainbow trout. *Veterinary Pathology*, **24**(1):31-43.
- Akanni KA & Akinwumi JA (2007). Determinants of variations in fish catch levels in artisanal fishing of Lagos state, Nigeria. *Research Journal of Fisheries and Hydrobiology*, **2**(1): 1-12.
- APHA (1985). *Standard method for the examination of water and waste water, Fifteen edition*. American Public Health Association, Washington DC, USA. Pp 413-426.
- Ardill JD (1982). Africa: A General Review of Coastal Aquaculture in the African Region. In: *Coastal aquaculture: Developmental perspectives in Africa and case studies from other regions*. (AG, Coche, editor). Food and Agriculture Organization of the United Nations, Rome, Italy. CIFA Technical Paper No. 9.
- Bakar NHA, Jusoh A, Ahmad MF, Noor MJMM & Norzilah A (2016). A spatial nutrient distribution due to Seabass aquaculture activities at Setiu, Terengganu, Malaysia. *Journal of Fisheries and Aquatic Science*, **11**(5): 332-348.
- Bancroft JD & Cook HC (1994). *Manual of Histological Techniques and their Diagnostic Application*. Churchill Livingstone, London. Pp 289–305.
- Bhatnagar A & Devi P (2013). Water quality guidelines for the management of pond fish culture. *International Journal of Environmental Sciences*, **3**(6): 1980-2009.
- Bichi AH & Dawaki SS (2010). A survey of ectoparasites on the gills, skin and fins of *Oreochromis niloticus* at Bagauda fish seed multiplication centre, Bagauda, Nigeria. *Bayero Journal of Pure and Applied Sciences*, **3**(1): 83-86.
- Camargo MM & Martinez C (2007). Histopathology of gills, kidney and liver of a Neotropical fish caged in an urban stream. *Neotropical Ichthyology*, **5**(3): 327-336.
- Canonico GC, Arthington A, McCrary JK & Thieme ML (2005). The effects of introduced tilapias on native biodiversity. *Aquatic Conservation:*

- Marine and Freshwater Ecosystem*, **15**(5): 463-483.
- Dane H & Sisman T (2015). Histopathological changes in gill and liver of *Capoeta capoeta* living in the Karasu River, Erzurum. *Environmental Toxicology*, **30**(8): 904-917.
- Das BK & Mukherjee SC (2000). A histopathological study of carp (*Labeo rohita*) exposed to hexachlorocyclohexane. *Veterinaski Arhiv*, **70**(4): 169-180.
- Doherty VF, Kanife UC & Okeleye BT (2013). Toxicological effects and histopathology of African catfish (*Clarias gariepinus*) exposed to water soluble fractions of diesel and kerosene. *Current Advances in Environmental Science*, **1**(2): 16-21.
- Edun OM, Alon R, Panpinit P, Dokubo T, Nweke F & Ogolo C (2014). Effects of water quality of the Boguwa Creek on tilapia culture. *Journal of Fisheries and Aquatic Science*, **9**(6): 463-467.
- Estim A & Mustafa S (2014). Water Quality Remediation Using Geotextile in Fish Hatchery Systems. *Journal of Aquaculture Research and Development*, **5**(4): 4 pages.
- Evans DH, Piermarini PM & Choe KP (2005). The multifunctional fish gill: Dominant site of gas exchange, osmoregulation, acid-base regulation and excretion of nitrogenous waste. *Physiological Review*, **85**(1): 97-177.
- Fafioye OO, Fagade SO & Adebisi AA (2005). Toxicity of *Raphia vinifera*, P. beauv fruit extracts on biochemical composition of Nile Tilapia (*Oreochromis niloticus*, Trewavas). *Biokemistri*, **17**(2), 137-142.
- Fanta E, Rios FS, Romão S, Vianna ACC & Freiburger S (2003). Histopathology of the fish *Corydoras paleatus* contaminated with sublethal levels of organophosphorus in water and food. *Ecotoxicology and Environmental Safety*, **54**(2): 119-130.
- Fernandes MN & Mazon AF (2003). Environmental Pollution and Fish Gill Morphology. In: *Fish adaptation*. (AL Val, BG Kapoor, editors). Science Publisher, Enfield. Pp 203-231.
- Flores-Lopes F & Thomaz AT (2011). Histopathologic alterations observed in fish gills as a tool in environmental monitoring. *Brazilian Journal of Biology*, **71**(1): 179-188.
- Francis-Flyod R, Watson C, Petty D & Ponder DB (2009). *Ammonia in aquatic systems*. UF/Institute of Food and Agriculture Sciences (IFAS), Extension no. FA16. University of Florida, Gainesville. Pp 1-5.
- Hargreaves JA & Tucker CS (2004). Managing ammonia in fish ponds. Southern Regional Aquaculture Center. SRAC Publication No. 4603.
- Hassan AS, Sayed SH & Ibrahim EM (2008). Effects of stoking rates and supplementary feed on the growth performance of blue tilapia (*Oreochromis aureus*) and grass carp (*Ctenopharyngodon idella*) reared in earthen ponds. Eight International Symposium on Tilapia Aquaculture. Pp 949-964.
- Heath AG (1987). *Water Pollution and Fish Physiology*. CRC Press Inc., Boca Raton. Pp 145.
- Hinton DE & Lauren DJ (1990). Integrative histopathological approaches to detecting effects of environmental stressors on fishes. *American Fish Society Symposium*, **8**: 51-66.
- Ibrahim N & El-Naggar G (2010). Water quality, fish production and economics of Nile tilapia, *Oreochromis niloticus* and African catfish, *Clarias gariepinus* monoculture and polyculture. *Journal of the World Aquaculture Society*, **41**(4): 574-582.
- Ip YK, Chew SF & Randall DJ (2001). Ammonia toxicity, tolerance, and excretion. In: Wright, PA, Anderson PM (eds.). *Fish Physiology*, Vol. 20. Academic Press, New York. Pp 109-148.
- Kurtović B, Teskeredžić E & Teskeredžić Z (2008). Histological comparism of spleen and kidney from farmed and wild European sea brass (*Dicentrarchus labrax* L.). *Acta Adriatica*, **49**(2): 147-154.
- Lind OT (1979). *A Handbook of Limnological Methods*. CV Mosby Co., St. Louis, USA. Pp 199.
- Mallat J (1985). Fish gill structural changes induced by toxicants and other irritants. A statistical Review. *Canadian Journal of Aquatic Sciences*, **42**(4): 630-648.
- Marchand MJJ, Van Dyk C, Pieterse GM, Barhoorn IEJ & Borman MS (2009). Histopathological alterations in the liver of the sharptooth catfish *Clarias gariepinus* from polluted aquatic ecosystems in South Africa. *Environmental Toxicology*, **24**(2): 133-147.
- Martinez CBR, Nagae MY, Zaia CTBV & Zaia DAM (2004). Morphological and physiological acute effects of lead in the Neotropical fish,

- Prochilodus lineatus*. *Brazilian Journal of Biology*, **64**(4): 797-807.
- Mazon AF, Cerqueira CCC, Monteiro EAS & Fernandes MN (1999). Acute copper exposure in freshwater fish: Morphological and physiological effect. In: *Biology of tropical fishes*. (AL Val, VMF Almeida-Val, editors). INPA, Manaus. Pp 263-275.
- Midhila MN & Chitra KC (2015). Nonylphenol-induced hepatotoxicity in the freshwater fish, *Oreochromis mossambicus*. *International Journal of Scientific Research Publications*, **5**(3): 1-5.
- Naylor RL, Golgberg RJ, Primavera JH, Kaustsky N, Baveridge MCM, Luncheon J, Mooney H & Troell M (2000). Effects of aquaculture on world fish supplies. *Nature*, **405**(6790): 1017-1024.
- Obigacion, FR (2015). Pasig River's environment, biodiversity and land use: A "dead" river in Manila, Philippines. Available from: <http://www.linkedin.com/pulse/waterair-quality-biodiversity-land-use-indicators-dead-obigacion>, retrieved 07-12-2016.
- Oliveira Ribeiro CA, Filipack F, Mela M, Silva PH, Randi MAF, Costa JRA & Pelletier E (2006). Hematological findings in neotropical fish *Hoplias malabaricus* exposed to subchronic and dietary doses of methylmercury, inorganic lead and tributyltin chloride. *Environmental Research*, **101**(1): 74-80.
- Patel B, Upadhyay A & Parikh P (2016). Histological changes in the tissues of *Oreochromis mossambicus* and *Labeo rohita* on exposure to imidacloprid and curzate. *International Journal of Research in Applied, Natural and Social Sciences*, **4**(5): 149-160.
- Poleksic V & Mitrovic-Tutundzic V (1994). Fish Gills as a Monitor of Sublethal and Chronic Effects of Pollution. In: *Sublethal and chronic effects of pollutants on freshwater fish*. (R Muller, R Llyod, editors). Cambridge University Press, Cambridge. Pp 339-352.
- Popma TJ & Lovshin, LL (1996). Worldwide prospects for commercial production of tilapia. Research and Development Series No. 41. Available from: http://www.ag.auburn.edu/fish/documents/International_Pubs/R&D%20Series/41%20-%20Worldwide%20Prospects%20Commercial%20Tilapia.pdf, retrieved 22-11-16.
- Popma T & Masser M (1999). *Tilapia: Life History and Biology*. Southern Regional Aquaculture Centre. SRAC Publication No. 283.
- Rabbito IS, Costa JRMA, Silva de Assis HC, Randi MAF, Akaishi FM, Pelletier E, Oliveira Ribeiro CA (2005). Dietary Pb(II) and TBT (tributyltin) exposures to neotropical fish *Hoplias malabaricus*: Histopathological and biochemical findings. *Ecotoxicology and Environmental Safety*, **60**(2): 147-156.
- Rakocy JE & McGinty AS (1989). *Pond Culture of Tilapia*. Southern Regional Aquaculture Centre, SRAC Publication No. 280.
- Redner BD & Stickney RR (1979). Acclimation to ammonia by *Tilapia aurea*. *Transactions of the American Fisheries Society*, **108**(4): 383-388.
- Roberts RJ & Rodger HD (2012). The Pathophysiology and Systemic Pathology of Teleosts. In: *Fish pathology*. (R Roberts, editor). Wiley-Blackwell, West Sussex. Pp 83.
- Saeed SM & Batran AM (2014). Evaluation of water quality parameters in two different fish culture regimes. fourth Conference of *Central Laboratory for Aquaculture Research*. Pp 17-33.
- Sevilleja RC (1985). Tilapia Production in Freshwater Fish Pond of Central Luzon, Philippines. In: *Proceeding of a PCARRD-ICLARM Workshop*, Los Banõs, Laguna, Philippines (IR Smith, EB Torres, EO Tan, editors). Pp 115-126.
- Shoko AP, Limbu SM, Mrosso HDJ & Mgaya YD (2014). A comparison of diurnal dynamics of water quality parameters in Nile tilapia (*Oreochromis niloticus*, Linnaeus, 1758) monoculture and polyculture with African sharp tooth catfish (*Clarias gariepinus*, Burchell, 1822) in earthen ponds. *International Aquatic Research*, **6**(1): 1-13.
- Srivastav AK, srivastav SK, Srivastav SK (1997). Impact of deltamethrin on serum calcium and inorganic phosphate of freshwater catfish, *Heteropneustes fossilis*, *Bulletin of Environmental Contamination and Toxicology*, **59**(5): 841-846.
- Troell M, Naylor RL, Metian M, Baveridge M, Tyedmers PH, Folke C, Arrow KJ, Barrett S, Crépin A, Ehrlich PR, Gren A, Kautsky N, Levin SA, Nyborg K, Osterblom H, Polasky S, Scheffer M, Walker BH, Xepapadeas T & de Zeeuw A (2014). Does aquaculture add resilience to the global food system?

- Proceedings of National Academic Science*, **111** (37): 13257–13263.
- UNDRO (1988). Nigerian floods/dam burst Aug. 1988
UNDRO Information Report 1. UNDRO
88/1703. UN Department of Humanitarian
Affairs.
<http://reliefweb.int/report/nigeria/nigeria-floodsdam-burst-aug-1988-undro-information-report-1>, retrieved 21-11-16.
- Van der Oost RJ, Beber J & Vermuelen NPE (2003).
Fish bioaccumulation and biomarkers in
environmental risk assessment: A review.
*Environmental Toxicology and
Pharmacology*, **13**(2): 57-149.
- Yadar CNR (2006). Tilapia: An introduction and
prospects of its culture in Nepal. *Our
Nature*, **4**(1): 107-110.
- Yakubu AF, Nwogu NA, Apochi JO, Olaji ED & Adams
TE (2014). Economic profitability of Nile
Tilapia (*Oreochromis niloticus*, Linnaeus,
1758) in semi flow-through culture system.
Journal of Aquatic Science, **2**(1): 1-4.